

Convention Agenda

Friday, April 12

8:00 am - 9:00 am

- Katheryn Boada, MA, CCC-SLP, as our Keynote Presentation: *Advocacy, Leadership and Volunteerism*

9:30 am - 11:00 am

- 1.1 Linda Richards, MS, CCC-SLP – *Momma’s Not Eating! Strategies to Improve Oral Intake for Residents With or Without Dementia*
- 1.2 Dannel Friel – *Getting Started With Eye Tracking for Adults*
- 1.3 *School Issues Committee Forum*
- 1.4 Hsinhuei Sheen Chiou, PhD, CCC-SLP – *Semantic Dementia: Diagnosis, Treatment and Resources*

11:30 am – 1:00 pm

- Policy Council Open Forum
- Honors and MSHF Scholarships and Luncheon

1:15 pm - 2:45 pm

- 2.1 Michelle Dawson, MS, CCC-SLP – *Chasing the Swallow: Best Practices for EI Pediatric Dysphagia, Part 1*
- 2.2 Bridget Gilormini, MS – *APPy Hour: Apps for AAC—A Feature Comparison*
- 2.3 Jill Rentmeester Disher, PhD, CCC-SLP – *Equity-Based, Literacy-Based Intervention for School-Age Language Impairment, Part 1*
- 2.4 Christina Kruse MS, CCC-SLP and Panel – *Fiberoptic Endoscopic Evaluation of Swallowing (FEES) Round Table: How is FEES Currently Used in Minnesota?*

3:00 pm - 4:30 pm

- 3.1 Michelle Dawson, MS, CCC-SLP – *Chasing the Swallow: Best Practices for EI Pediatric Dysphagia, Part 2*
- 3.2 To Be Determined
- 3.3 Jill Rentmeester Disher, PhD, CCC-SLP – *Equity-Based, Literacy-Based Intervention for School-Age Language Impairment, Part 2*
- 3.4 Jayne Kane – *Care for the Caregiver*

4:30 pm - 6:00 pm

- Poster Sessions | MSHF Silent Auction

6:30 pm

- Social Event | Watch the website for details.

Saturday, April 13

8:00 am - 9:30 am

- 4.1 Michelle Dawson, MS, CCC-SLP – *Best Practices in Early Intervention With Down Syndrome, Part 1*
- 4.2 Steven Kaufman – *Unleash Your Stuttering Superstar! A Guide to Positive Motivation! Part 1*
- 4.3 Mary Hunt, MA, NCSP – *Trauma Informed Therapy With Communication Disorders, Part 1*
- 4.4 Julie Stierwalt, PhD – *Adult Cognitive Deficits and Strategies, Part 1*

10:00 am - 11:30 am

- 5.1 Michelle Dawson, MS, CCC-SLP – *Best Practices in Early Intervention With Down Syndrome, Part 2*
- 5.2 Steven Kaufman – *Unleash Your Stuttering Superstar! A Guide to Positive Motivation! Part 2*
- 5.3 Mary Hunt, MA, NCSP – *Trauma Informed Therapy With Communication Disorders, Part 2*
- 5.4 Julie Stierwalt, PhD – *Adult Cognitive Deficits and Strategies, Part 2*

11:45 am - 1:15 pm

- Annual Business Meeting Luncheon
- Open Mic, Poster Awards and Silent Auction Results

1:30 pm - 3:00 pm

- 6.1 *Health Care Issues Forum*
- 6.2 Melissa Jakobowitz, MA, CCC-SLP, BCS-CL – *The Business of Telepractice, Part 1*
- 6.3 Katheryn Boada, MA, CCC-SLP – *Speech Sound Disorders and Dyslexia, Part 1*
- 6.4 Marilyn Fairchild, MA, CCC-SLP – *Transgender Voice and Other Part 1*

3:15 pm - 4:45 pm

- 7.1 *Student Forum*
- 7.2 Melissa Jakobowitz, MA, CCC-SLP, BCS-CL – *The Business of Telepractice, Part 2*
- 7.3 Katheryn Boada, MA CCC-SLP – *Speech Sound Disorders and Dyslexia, Part 2*
- 7.4 Marilyn Fairchild, MA, CCC-SLP – *Transgender Voice and Other Part 2*

Continuing Education



The Minnesota Speech-Language-Hearing Association is approved by the Continuing Education Board of the American Speech-Language-Hearing Association (ASHA) to provide continuing education activities in speech-language pathology and audiology. **See course information for number of ASHA CEUs, instructional level and content area.** ASHA CE Provider approval does not imply endorsement of course content, specific products or clinical procedures.

This program is offered for up to 1.3 ASHA CEUs (Various levels; Professional area).

Presenter Disclosure Statements

Presenters of the Minnesota Speech-Language-Hearing Association have relevant financial and non-financial relationships to disclose. Full disclosure for the presenters is provided on the MNSHA website. Please visit the website, <http://mnsa.org/pdfs/2019-convention-disclosures.pdf> to view all presenter disclosures.

Registration

Watch for online registration at www.mnsa.org or complete the following form.

Name: _____
 Address: _____
 City: _____ State: _____ Zip: _____
 Email Address: _____
(required for final CE submission)
 Cell Phone: _____
 Food Allergies: _____

Registration Fees

In order to qualify for member rates, you must be a current MNSHA member. See www.mnsa.org for membership rates or contact the MNSHA Office at 855-727-2836 or office@mnsa.net.

Convention Registration	On or before 3/14/19	After 3/14/19	Total Amount
Full Convention (Member)			
MNSHA Member	\$270	\$300	
Life Member	\$185	\$215	
Retired Member	\$235	\$265	
Student Member	\$100	\$130	
Full Convention (Non-Member)			
Non-Member	\$375	\$405	
Student Non-Member	\$130	\$160	
One Day Only (Member)			
MNSHA Member <input type="checkbox"/> Fri <input type="checkbox"/> Sat	\$190	\$220	
Life Member <input type="checkbox"/> Fri <input type="checkbox"/> Sat	\$135	\$165	
Retired Member <input type="checkbox"/> Fri <input type="checkbox"/> Sat	\$180	\$210	
Student Member <input type="checkbox"/> Fri <input type="checkbox"/> Sat	\$80	\$110	
One Day Only (Non-Member)			
Non-Member <input type="checkbox"/> Fri <input type="checkbox"/> Sat	\$295	\$325	
Student Non-Member <input type="checkbox"/> Fri <input type="checkbox"/> Sat	\$110	\$140	
TOTAL DUE			

Payment Method

Check (payable to MNSHA) Mastercard Visa Discover AMEX

CC Number: _____

Exp. Date: _____

Mail to: MNSHA | 700 McKnight Park Drive, Suite 708 | Pittsburgh, PA 15237
 Fax: 888-729-3489

Please indicate which sessions you are likely to attend.

Friday Sessions

- Keynote
- 1.1
- 1.2
- 1.3
- 1.4

- 2.1
- 2.2
- 2.3
- 2.4
- 3.1
- 3.2
- 3.3
- 3.4

Saturday Sessions

- 4.1
- 4.2
- 4.3
- 4.4
- 5.1
- 5.2
- 5.3
- 5.4
- 6.1
- 6.2
- 6.3
- 6.4
- 7.1
- 7.2
- 7.3
- 7.4

Attending Friday Lunch

Attending Saturday Lunch

Hotel Accommodations



Bloomington-Minneapolis
3200 East 81st Street
Bloomington, MN 55425

A special room rate of \$124 per night will be available until March 13, 2019, or until the room block is sold out, whichever occurs first. Please book early to ensure a room at the host hotel.

Call: 1-888-421-1442 or 402-592-6464 to request a room in the Minnesota Speech-Language-Hearing Association Block.

At Your Finger Tips:



Convention Pathfinder

Session and presenter information conveniently located on your mobile device. Watch for details.

Online CE Reporting

No more standing in line to turn in your paperwork. Report your continuing education hours for ASHA or just for MNSHA record keeping using the Online CE Reporting System.

It's Fast, Easy and Electronic, Saving You Time!



Cancellation Policy

Refund requests, with a \$25 administrative fee, are possible through Friday, March 29, 2019, if received in writing.

MNSHA 2019 CONVENTION

MN **SHA** Office
MINNESOTA SPEECH-LANGUAGE-HEARING ASSOCIATION
700 McKnight Park Drive, Suite 708
Pittsburgh, PA 15237

Presorted
Standard
U.S. Postage
PAID
Pittsburgh, PA
Permit #2191

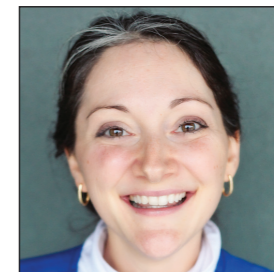


April 12-13, 2019 | Bloomington, Minnesota



**Katheryn Boada,
MA, CCC-SLP**

- Keynote Address: *ASHA Advocacy, Leadership and Volunteerism*
- *Speech Sound Disorders and Dyslexia*



**Michelle Dawson,
MS, CCC-SLP**

- *Chasing the Swallow: Best Practices for EI Pediatric Dysphagia*
- *Best Practices in Early Intervention With Down Syndrome*